

# osc.

**optrel**<sup>®</sup>  
swiss made 

Evidence of decades of experience  
Now with newest ADF technology.



#### SHADE LEVEL 4 / 9-13

With a seamless shade level adjustment from DIN 9 to 13, the **optrel osc** is the perfect solution for all popular welding applications.



#### TRUE COLOR VIEW

The specially developed UV/IR filter allows a realistic perception of colors, at long last bringing color into the world of the welder.



#### DELAY FUNCTION

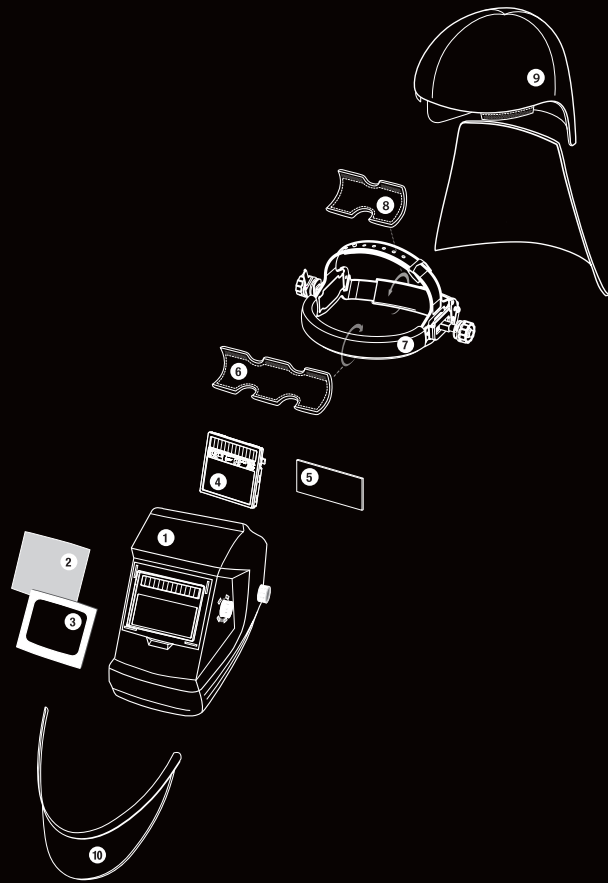
After shutdown of the welding arc, the ADF momentarily stays closed to protect eyes from the strong afterglow of the welding seam.



#### EXCHANGEABLE BATTERIES

New energy supply concept with exchangeable batteries.

**Automatically better welding**



## Helmet system



osc welding helmet  
black untreated

## Item no.

1000.053

## Spare parts and accessories

## Item no.

1	Helmet shell <b>osc</b>	5001.055
2	Inside cover lens <b>osc</b> (5 pcs.)	5000.001
3	Frame for front cover lens <b>osc</b> (10 pcs.)	5000.490
4	ADF cartridge <b>osc</b>	5012.046
5	Front cover lens <b>osc</b> (10 pcs.)	5000.105
6	Cotton sweatband (2 pcs.)	5004.073
7	Adjustable headband (including sweatband and comfortband)	5003.250
8	Comfortband (2 pcs.)	5004.020
9	Head & neck protector, leather	4028.016
10	Chest protector, leather	4028.015

## TECHNICAL DATA

Description	ADF cartridge with true color view filter technology. Shade levels from 9 to 13 continuously adjustable with knob; continuously adjustable sensitivity (with 'super high' range) and delay function	
Shade levels	inactive: Shade level 4 active: Shade level 9-13	
Power supply	Solar cells, 2 pcs batteries 3V exchangeable (CR2032)	
Operating time batteries	Approx. 3,000 hours (operating)	
Sensors	3 sensors	
Sensitivity	Continuously adjustable, new with "Super High" sensitivity	
Switching time	light to dark: 0.100 ms at room temperature 0.100 ms at 55°C dark to light: 0.05 s - 1.0 s	
Classification EN379	Optical class:	1
	Scattered light:	1
	Homogeneity:	1
	Angular dependence:	2

ADF size	50 x 100 mm
Shape stability	Welding mask: up to 220°C / 428°F Front cover lens: up to 137°C / 266°F
Eye protection	Ultraviolet / Infrared Protection: maximum protection at any shade level
Operating temperature	-10°C to + 70°C / 14°F to 158°F
Storage	-20°C to + 70°C / -4°F to 176°F In a dark place
Weight	495 g / 17.4 oz
Application ranges	Any electric arc welding process Electrode Welding (Stick Welding, SMAW) / MIG / MAG (GMAW) / GMAW High melting rate process / Flux Cored Wire Welding / TIG welding (GTAW) / Plasma Arc Welding / Plasmacutting & Oxy-gas Welding <i>Prohibited for laser welding!</i>
Scope of delivery	Welding helmet, instruction manual, batteries
Standards	CE, ANSI, EAC, AS/NZS, complies with CSA Z94.3
Warranty	2 years (except batteries)



optrel AG  
industriestrasse 2  
CH-9630 wattwil  
switzerland  
www.optrel.com  
info@optrel.com

optrel.com

